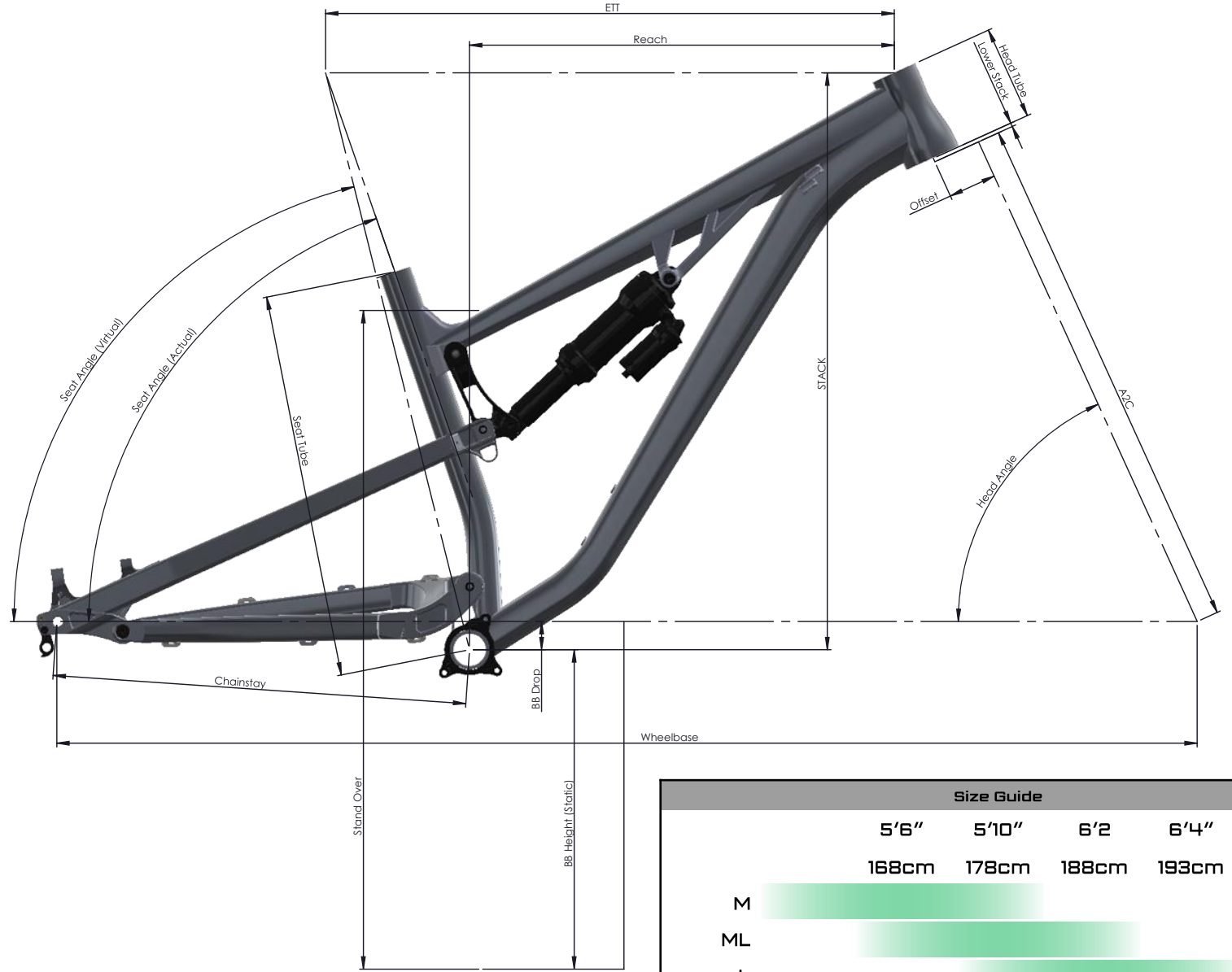


	MEDIUM	MEDIUM LONG	LARGE	EXTRA LARGE
ETT	605mm	630mm	655mm	680mm
REACH	452mm	475mm	500mm	522mm
STACK	614mm	623mm	623mm	632mm
CHAINSTAY	440mm	440mm	440mm	440mm
SEAT TUBE	395mm	420mm	445mm	470mm
HEAD TUBE	100mm	110mm	110mm	120mm
WHEELBASE	1213mm	1240mm	1265mm	1292mm
STAND OVER	699mm	700mm	700mm	704mm
FRAME WEIGHT	3080g	3180g	3210g	3250g

	150mm Fork 561mm A2C	160mm Fork 571mm A2C	170mm Fork 581mm A2C
HEAD ANGLE (Static)	65.5°	65.1°	64.7°
HEAD ANGLE (Sagged)	65°	64.7°	64.4°
SEAT ANGLE, Virtual (Actual)	76° (71°)	75.6° (70.6°)	75.2° (70.2°)
BB DROP	30mm	27mm	24mm
BB HEIGHT (Static)	340mm	343mm	346mm
BB HEIGHT (Sagged)	292mm	295mm	297mm



Size Guide				
	5'6"	5'10"	6'2"	6'4"
	168cm	178cm	188cm	193cm
M	████████████████████		████████████████████	
ML	████████████████████			████████████████████
L	████████████████████			
XL	████████████████████			

Rear Travel	150mm
Front Travel	150mm (150mm-170mm)
Wheel Size	29"
Tyre Clearance	29" x 2.5"
Shock Size	230 x 65, 30 x 8 hardware both ends
Shock Tune	RS Air LL1 or LLC RS Coil ML1 or MLC
Rear Derailleur Hanger	Bird Mech Hanger
Chain Guide Mounts	ISCG05, 1mm backset
Bottom Bracket	73mm BSA Threaded
Headset	Z544 top Z556 bottom
Fork offset	42-46mm
Brake mount	160mm post
Chainline	Boost, 52mm
Seat post	31.6mm
Seat clamp	34.9mm
Rear axle	148x12, 180mm M12x1.75
Notes	Fork offset is a recommendation, not a rule. All offsets in the range 37-51mm will work, although the handling will change with the offset. The guidance provided is to show how we like it. Shock Tunes are given as guidance only.

